

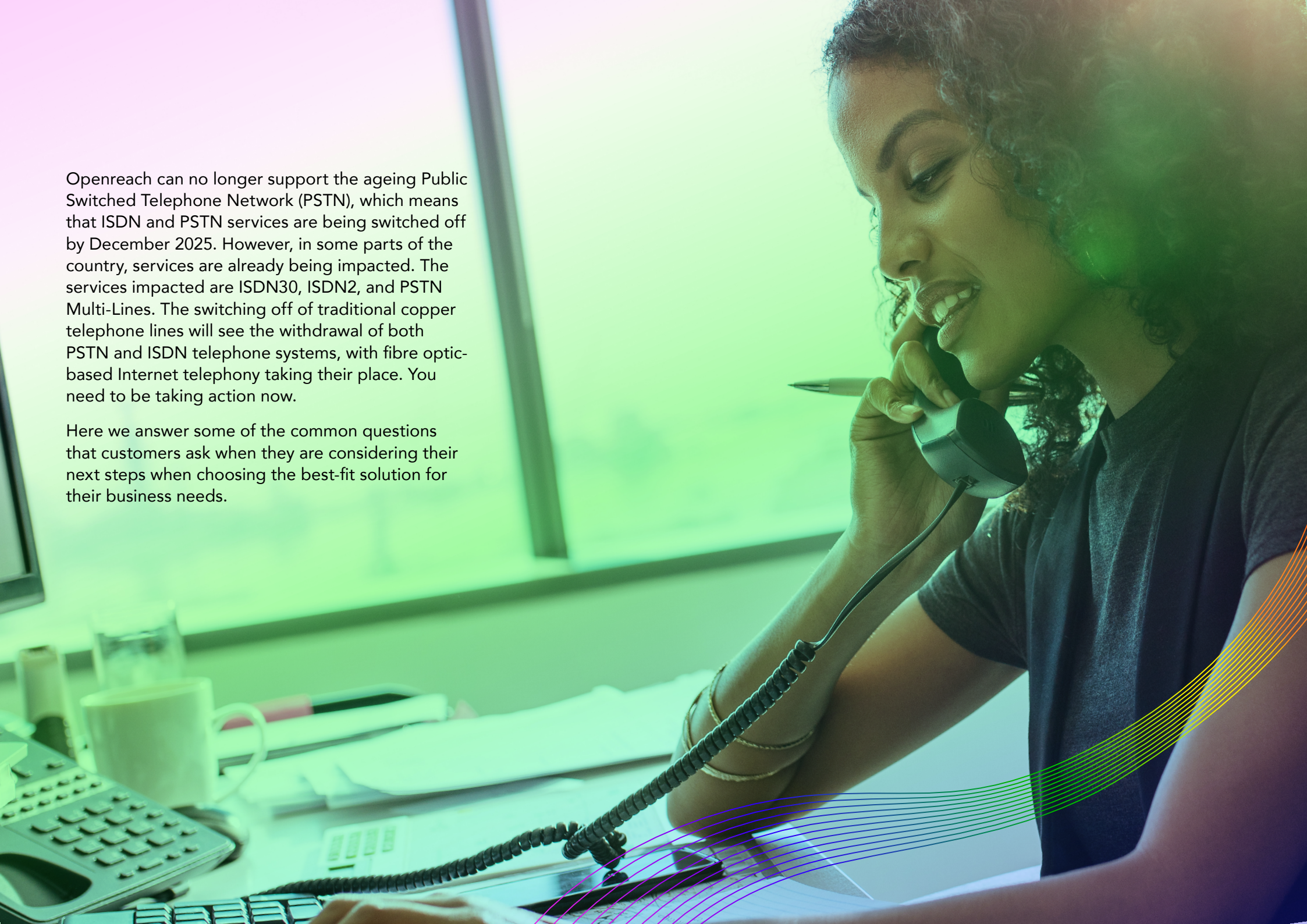


daisy.

ARE YOU SWITCHED ON TO THE PSTN SWITCH-OFF?

We answer some of the most frequently asked questions about the ISDN PSTN switch off and what it will mean for your business.





Openreach can no longer support the ageing Public Switched Telephone Network (PSTN), which means that ISDN and PSTN services are being switched off by December 2025. However, in some parts of the country, services are already being impacted. The services impacted are ISDN30, ISDN2, and PSTN Multi-Lines. The switching off of traditional copper telephone lines will see the withdrawal of both PSTN and ISDN telephone systems, with fibre optic-based Internet telephony taking their place. You need to be taking action now.

Here we answer some of the common questions that customers ask when they are considering their next steps when choosing the best-fit solution for their business needs.

FAQS

1. What is stop-sell?

Stop-sell applies at a premises level where that premise has access to an available FTTP product. Where a premise has access to FTTP there will be no new supply of other products, CP transfers, working line takeovers, addition of broadband to voice lines, or bandwidth modifications.

- If a premise has GEA-FTTP available to order, then only GEA-FTTP is available to that premise and instantly become within the scope of stop-sell.
- If a premise does not have GEA-FTTP available, SOGFAST, SOGEA, GEA-FTTC, SOTAP (where no fibre is available), MPF and WLR (only until September 2023) will be available.

2. Will the stop-sell principles apply to the Salisbury and Mildenhall trial exchanges?

The same stop-sell principles will apply for the fibre exchanges in Salisbury and Mildenhall. Openreach plans to modernise its network to support the delivery of telephone services using Internet protocol (IP) technology, and to upgrade its copper lines to fibre. As part of this, it will undertake two trials:

The Salisbury trial (Dec 2020) will test the processes for migrating customers to fibre services and, ultimately, withdrawing legacy copper services.

The Mildenhall trial (May 2021) will test the processes for withdrawing Wholesale Line Rental (WLR), and migrating customers from legacy copper services to fibre – which will support the delivery of telephone services over broadband connections. MPF and SOTAP will be available in a fibre area if there is no spare fibre capacity.

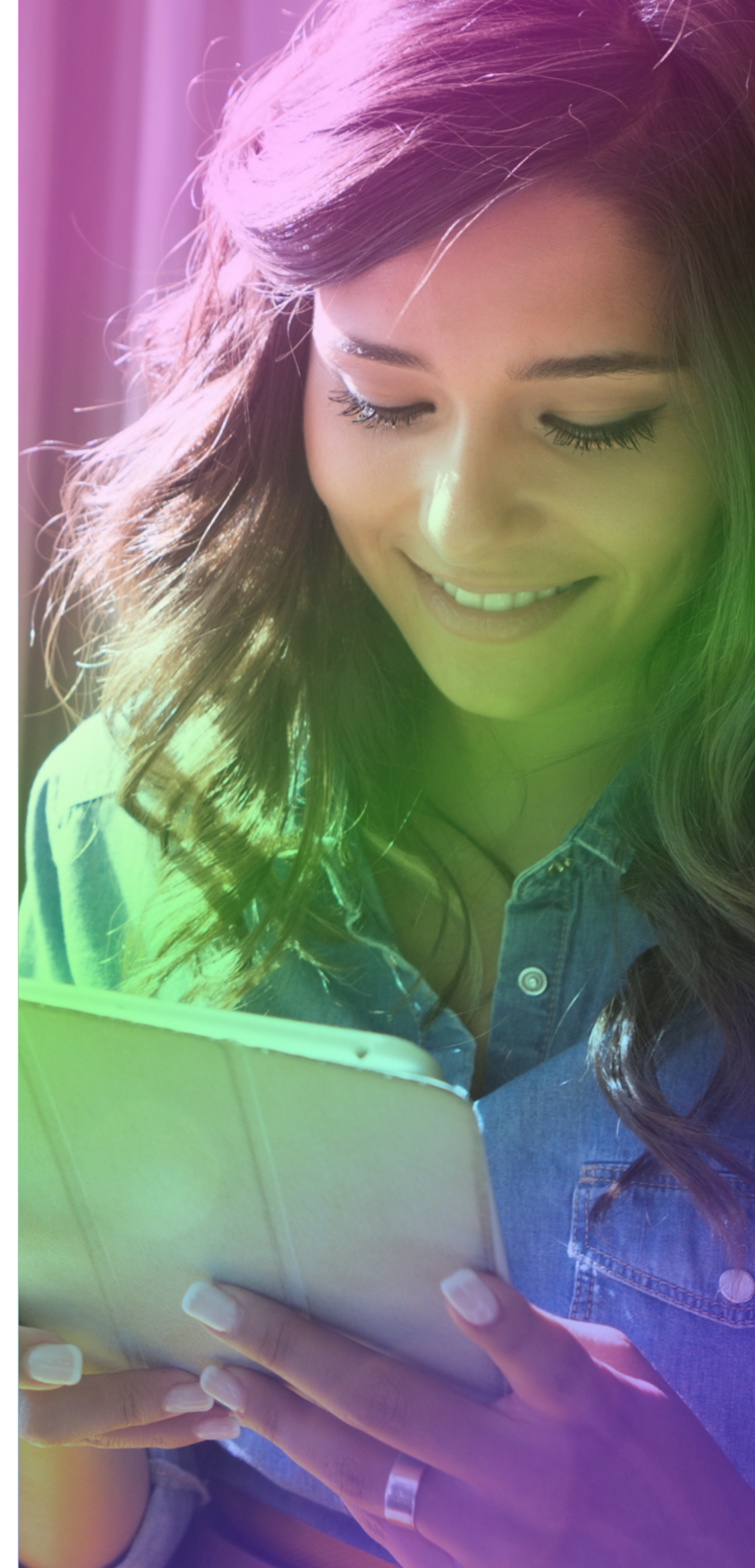
Order journeys • Existing product at a premise • New premise	If the premise is ENABLED for FTTP	If the premise is NOT ENABLED for FTTP
WLR/ MPF and SLU MPF Provision including new supply, transfers and working line take over etc.	Restricted	No change – this will follow nationwide Stop Sell in September 2023. If the premise has availability for Single Order products such as SOGEA. This should be chosen over WLR and FTTC.
WLR/ MPF and SLU MPF Modify that increase the asset base (including increase and decrease of channels)	Restricted	
LLU-SMPF, SLU-SMPF and FTTC Provision and Modify	Restricted	
SOTAP and MPF Provision, Speed Upgrade and Modify	Restricted	
Non Standard Lines (non-served premises, short duration lines and hot sites)	No change until available on FTTP	

3. If I migrate to SOGEA and then FTTP becomes available at the premises, do I need to do a second migration onto FTTP?

As part of the FTTP exchange upgrade programme, any premises enabled for FTTP should have migrated to an FTTP solution, this also includes any premises connected to SOGEA.

4. Are there going to be more exchanges confirmed going forwards as part of the FTTP Exchange Upgrade Programme?

Yes. Openreach has confirmed that this will most likely become a continual advancement as more and more FTTP is rolled out and are expected to release these details on a quarterly basis.



FAQS

Daisy's Asset Audit is a service that identifies and reviews your current WLR estate, whether the assets are with Daisy, another provider, or a mixed estate. Daisy's specialist team can help you assess your needs and manage a seamless migration that works for you, your staff and your customers.

Get in touch and we can discuss your requirements on 0344 863 3000 or visit us for more information at daisyuk.tech/pstn.

5. Which products are affected?

The PSTN supports a number of Openreach products: WLR3 analogue, ISDN2, ISDN30, LLU SMPF, SLU SMPF, Narrowband Line Share and Classic products. These products are generically referred to, as part of the industry programme, as WLR products. When the analogue network closes in 2025 these products will no longer be available.

6. If I need to keep a copper type service, can I migrate to LLU?

In some circumstances where the customer is not in an exchange area that is impacted by the FTTP Exchange Upgrade stop-sell, they can migrate to LLU MPF (only where there is no FTTP availability).

7. If I have a line rental and broadband service but now only require broadband, what do I do?

You can migrate over to a Single Order broadband product. The voice service will stop working and effectively becomes redundant in this instance. Voice service will become an optional add-on to your broadband service.

8. Can I keep my current phone number?

You can keep your current phone number if you inform your service provider at point of sale or when the migration order is placed, but you will need to take out an OTT IP Voice service (to run parallel with your Single Order Broadband product) and indicate that you wish to port the number onto the new IP Voice service otherwise you will lose the number once the service migrates away from the existing WLR or MPF service.

9. Is there any push back on any key dates previously referenced in the roadmap due to COVID-19?

The 2025 WLR withdrawal date is not something that can be pushed back, this was defined as a necessity due to the BT Group PSTN network infrastructure reaching its end of life. This also means it is crucial that the other key dates leading up to the 2025 withdrawal date also do not get pushed back. This will of course be continued to be monitored as per updates directly from Openreach and Ofcom.

10. Can I migrate all of my services in bulk?

Daisy will work alongside you to ensure all of your services migrate/are upgraded to the new solution. At present there is no bulk order option in place, but all orders can be placed.

11. What is an ATA port?

ATA stands for Analogue Telephone Adaptor. They are used to allow end users (EUs) to utilise their old hardware equipment. New Technicolor broadband routers and all models will include an ATA port later in 2020.

12. If I have an ATA will I still require an IP Voice service?

Yes, your ATA will convert your analogue signals to digital IP Voice but, in order to use this, you must have an IP Voice product over the top of your new Single Order broadband to transmit the calls.

13. Will it be possible to use your own routers if they are compatible with FTTC?

Yes, if you are already on an FTTC enabled router then it will be compatible as SOGEA is built upon the same foundations. We are also awaiting updates from Openreach, Ofcom and market leaders in router technological specifications to confirm what will still be compatible and what hardware will become redundant.

14. Is there a porting process that doesn't cut the circuit moving to VoIP?

SOGEA and FTTP orders will need to have a voice order placed alongside the migration order. These do not work like the current SIM2 orders so an OTT (over the top) voice order will need to be raised to run parallel with a significant amount of notice, in order for the number to port over to the IP Voice service.

15. If my business relies on devices such as alarm systems, CCTV, lift lines, card payment machines etc. – will these work on the new Single Order products?

It is imperative that you contact the vendor of these devices to confirm whether they are IP-compatible or not. If they are not, you will need to source new devices which are IP-compatible, to allow you to continue operating as a business. Otherwise, these devices will cease to work when moving to a Single Order product. If you need advice, get in touch and we can discuss your business requirements on 0344 863 3000.

FAQS

16. After the stop-sell period can you still undertake CP to CP migrations?

Migrations between communications providers (CP) will still be available but the destination product they are migrating to will need to align with the stop-sell rules. Meaning that if the end-user (EU) is in the FTTP footprint, then they can only migrate over to FTTP.

17. If I need any additional calling and network features and they sit within the affected exchanges, will these still be available?

Yes these features will be available until the stop-sell dates however, we would encourage that you arrange to migrate over to FTTP solutions with an OTT voice solution so that you are prepared and ready for when the PSTN is switched off.

18. What are the Single Order products and what do they do?

Alternative copper and fibre products:

Fibre to the Premises (FTTP) is the fastest and most resilient all-fibre product with broadband speeds of up to 1Gbps download and 220Mbps upload and can be purchased on its own.

Fibre to the Cabinet (FTTC) is a form of fibre optic communication delivery in which the optical fibre runs all the way from the exchange to the street cabinet and uses the existing copper network to reach the home or office. The remaining part of the access network from the cabinet to the customer is usually copper wire but could use other technologies such as wireless.

Single Order G.Fast (SOGFast) is a cutting-edge technology that delivers ultrafast speeds over existing copper lines of up to 330Mbps through a single order variant which forms part of the Openreach developing product portfolio.

Single Order GEA (SOGEA) Delivering superfast in a single order, speeds of up to 80Mbps will offer similar connectivity to FTTC without the need for an underlying Voice Access product.

Single Order Transitional Access Product (SOTAP) Supporting non-fibre areas with speeds of up to 17Mbps. This is a new product that will deliver a copper path between your premises and the SOTAP communication provider's (CP) exchange infrastructure, over which the SOTAP CP can provide broadband and IP Voice services. This is different from a Metallic Path Facility (MPF) because it facilitates the use of existing exchange infrastructure which currently supports LLU SMPF and therefore provides a better experience when migrating away from WLR products (with or without SMPF).

Ethernet offers a wide choice of high bandwidth, permanently-connected point-to-point services designed to help CPs extend their own networks and deliver a range of high-quality services to their customers. The Ethernet fibre network that underpins them offers unrivalled geographic coverage of the UK, embracing many out-of-town locations where manufacturing takes place and where many data centres of the future will be located.

19. What's the alternative in areas with no fibre availability?

There are a number of options, including utilising the new Single Order Transitional Access Product (SOTAP) which uses broadband rather than voice as the primary service, as well as mobile and Ethernet services.

20. What if I decide not to upgrade, opt out and stay with my current product portfolio?

There is no option to opt out of the FTTP trial exchanges. If you have a working WLR or MPF asset in one of the exchanges you will be impacted by the stop-sell principles and rules with the expectation that the existing bases will be migrated onto an all IP solution/alternative product by the end of the trials in December 2022.

21. Why do I need to act now?

The withdrawal of PSTN copper services has a deadline of Dec 2025. The change is happening, and you do not want to be left behind. Both hosted voice and SIP are easily scalable for any growth aspirations – Daisy can help you migrate your services with minimum disruption to your business. For all your voice and data solutions we can get you connected.

Exchange Name	Exchange Location	Exchange Code	Order restriction notification Date	Order restriction implementation Date
Chapel Brampton	Northampton (Northamptonshire)	EMCHAPE	08-Aug-23	20-Jul-22
Peopleton	Pershore	WMPEO	08-Aug-23	20-Jul-22
St Johns	Worcester	WMSTJ	08-Aug-23	20-Jul-22
Exhall	Coventry	CMEXH	08-Aug-23	20-Jul-22
Road	Road	EMRDDEE	08-Aug-23	20-Jul-22
Bagshot	Bagshot	THBA	08-Aug-23	20-Jul-22
Ranmoor	Sheffield	SLRN	08-Aug-23	20-Jul-22
Reading Earley	Reading	THEAR	08-Aug-23	20-Jul-22
Hednesford	Cannock	CMHED	08-Aug-23	20-Jul-22
Bradwell On Sea	Bradwell on Sea	EABRD	08-Aug-23	20-Jul-22
Chafford	Grays	EACHF	08-Aug-23	20-Jul-22
Goldhanger	Goldhanger	EAGOL	08-Aug-23	20-Jul-22
Harwich	Harwich	EAHWH	08-Aug-23	20-Jul-22
Little Clacton	Little Clacton	EALIT	08-Aug-23	20-Jul-22
Manton	Manton	EMMNTON	08-Aug-23	20-Jul-22
Plumtree	Keyworth	EMPLUMT	08-Aug-23	20-Jul-22
Burntisland	Burntisland	ESBUR	08-Aug-23	20-Jul-22
Kirkton Manor	Peebles	ESKKM	08-Aug-23	20-Jul-22
Monifieth	Monifieth	ESMNF	08-Aug-23	20-Jul-22
Newmills	Cairneyhill	ESNML	08-Aug-23	20-Jul-22
Arnside	Arnside	LCASD	08-Aug-23	20-Jul-22
Heywood	Greater Manchester - Rochdale	LCHEW	08-Aug-23	20-Jul-22
Nelson	Nelson (Pendle)	LCNEL	08-Aug-23	20-Jul-22
Erith	Greater London - Bexley	LSERI	08-Aug-23	20-Jul-22
Arrowebrook	Birkenhead	LVARR	08-Aug-23	20-Jul-22
Hale	Liverpool	LVHAL	08-Aug-23	20-Jul-22
Penketh	Warrington	LVPEN	08-Aug-23	20-Jul-22
Rainford	Rainford	LVRAI	08-Aug-23	20-Jul-22
Twickenham	Greater London - Richmond upon Thames	LWTWI	08-Aug-23	20-Jul-22

Exchange Name	Exchange Location	Exchange Code	Order restriction notification Date	Order restriction implementation Date
Heaton Moor	Greater Manchester - Stockport	MRHEA	08-Aug-23	20-Jul-22
Ringway	Greater Manchester - Trafford	MRRIN	08-Aug-23	20-Jul-22
Bridlington	Bridlington	MYBNN	08-Aug-23	20-Jul-22
Ramsgill Dale Uax13	Glasshouses	MYRAM	08-Aug-23	20-Jul-22
Starbeck	Harrogate	MYSRB	08-Aug-23	20-Jul-22
Steeton	Silsden	MYSTE	08-Aug-23	20-Jul-22
Collier Street	Collier Street	NDCST	08-Aug-23	20-Jul-22
Herne Bay	Herne Bay	NDHBA	08-Aug-23	20-Jul-22
Hoo	Rochester	NDHOO	08-Aug-23	20-Jul-22
Hythe	Hythe	NDHYT	08-Aug-23	20-Jul-22
Paddock Wood	Paddock Wood	NDPWO	08-Aug-23	20-Jul-22
Uckfield	Uckfield	NDUCK	08-Aug-23	20-Jul-22
Bamburgh	Bamburgh	NEBU	08-Aug-23	20-Jul-22
Catterick Camp	Catterick Garrison	NECC	08-Aug-23	20-Jul-22
Newcastle East	Newcastle upon Tyne	NENTE	08-Aug-23	20-Jul-22
Islandmagee	Larne	NIIM	08-Aug-23	20-Jul-22
Elgin	Elgin	NSELG	08-Aug-23	20-Jul-22
Baldock	Baldock	SMBC	08-Aug-23	20-Jul-22
Chiseldon	Chiseldon	SSCDN	08-Aug-23	20-Jul-22
Alderbury	Alderbury	STALDBY	08-Aug-23	20-Jul-22
Shaftesbury	Shaftesbury	STSHABY	08-Aug-23	20-Jul-22
Tredegar	Tredegar	SWTR	08-Aug-23	20-Jul-22
East Horsley	East Horsley	THEY	08-Aug-23	20-Jul-22
Spetchley	Tibberton (Wychavon)	WMSPE	08-Aug-23	20-Jul-22
Abergele	Abergele	WNAGE	08-Aug-23	20-Jul-22
Llanarmon D C	Llanarmon Dyffryn Ceiriog	WNLDC	08-Aug-23	20-Jul-22
Newtown	Newtown (Powys)	WNNN	08-Aug-23	20-Jul-22
Rhosllanerchrugog	Rhosllanerchrugog	WNRWX	08-Aug-23	20-Jul-22
Welshpool	Welshpool	WNWPL	08-Aug-23	20-Jul-22
Bishopbriggs	Bishopbriggs	WSBIS	08-Aug-23	20-Jul-22

Exchange Name	Exchange Location	Exchange Code	Order restriction notification Date	Order restriction implementation Date
Coulport	Ardpeaton	WSCOUC	08-Aug-23	20-Jul-22
Durisdeer	Carronbridge	WSDUE	08-Aug-23	20-Jul-22
Dunsyre	Elsrickle	WSDUY	08-Aug-23	20-Jul-22
Kilninver	Toberonochy	WSKII	08-Aug-23	20-Jul-22
Old Dailly	Old Dailly	WSOLD	08-Aug-23	20-Jul-22
Pinwherry	Pinmore	WSPIN	08-Aug-23	20-Jul-22
Mayals	Swansea	SWMYS	09-May-23	20-Jul-22
Chislehurst	Greater London - Bromley	LSCHI	09-May-23	20-Jul-22
Cogenhoe	Cogenhoe	EMCOGEN	09-May-23	20-Jul-22
Helsby	Helsby	LVHEL	09-May-23	20-Jul-22
Jamesbridge	Darlaston	CMJAM	09-May-23	20-Jul-22
Meltham	Meltham	MYMTH	09-May-23	20-Jul-22
Sunbury	Walton-on-Thames	LSSUN	09-May-23	20-Jul-22
Lossiemouth	Lossiemouth	NSLOS	09-May-23	20-Jul-22
Brixworth	Brixworth	EMBRIXW	09-May-23	20-Jul-22
Sidcup	Greater London - Bexley	LSSID	09-May-23	20-Jul-22
Marple	Greater Manchester - Stockport	MRMAR	09-May-23	20-Jul-22
Blaydon	Blaydon	NEBL	09-May-23	20-Jul-22
Lancing	Shoreham-by-Sea	SDLNCNG	09-May-23	20-Jul-22
Derrygonnelly	Enniskillen	NIDY	09-May-23	20-Jul-22
Aberdeen Balgownie	Aberdeen	NSBLG	09-May-23	20-Jul-22
Biggin Hill	Greater London - Bromley	NDBHI	09-May-23	20-Jul-22
Burton Joyce	Burton Joyce	EMBURTJ	09-May-23	20-Jul-22
Cleckheaton	Cleckheaton	MYCLE	09-May-23	20-Jul-22
Dawlish	Dawlish	WWDRAWL	09-May-23	20-Jul-22
Grove Park	Greater London - Lewisham	LSGRO	09-May-23	20-Jul-22
Harrold	Bedford	SMHA	09-May-23	20-Jul-22
Heysham	Heysham	LCHEY	09-May-23	20-Jul-22
Kislingbury	Bugbrooke	EMKISLI	09-May-23	20-Jul-22
Lowdham	Lowdham	EMLOWDH	09-May-23	20-Jul-22
Milnsbridge	Huddersfield	MYMIL	09-May-23	20-Jul-22
Redbourn	Redbourn	SMRDB	09-May-23	20-Jul-22
Stanford Le Hope	Stanford-le-Hope	EASTF	09-May-23	20-Jul-22

Exchange Name	Exchange Location	Exchange Code	Order restriction notification Date	Order restriction implementation Date
Tipton	Tipton	CMTIP	09-May-23	20-Jul-22
Turvey	Turvey	SMTU	09-May-23	20-Jul-22
Wheathampstead	Wheathampstead	SMWTD	09-May-23	20-Jul-22
Bourne	Bourne	EMBOURN	09-May-23	07-Apr-22
Buckhaven	Buckhaven	ESBUC	09-May-23	07-Apr-22
Cross Keys	Newport (Newport)	SWZKS	09-May-23	07-Apr-22
Dalton-In-Furness	Dalton-in-Furness	LCDTF	09-May-23	07-Apr-22
Gerrards Cross	Gerrards Cross	THGX	09-May-23	07-Apr-22
Hartford	Northwich	MRHAR	09-May-23	07-Apr-22
Hatfield Woodhouse	Dunscroft	SLHTW	09-May-23	07-Apr-22
Irlam	Greater Manchester - Salford	MRIRL	09-May-23	07-Apr-22
Llantrisant	Llantrisant	SWLLO	09-May-23	07-Apr-22
Madingley	Caldecote	EAMAD	09-May-23	07-Apr-22
Manor Park	Runcorn	LVMFK	09-May-23	07-Apr-22
Newbridge	Newport (Newport)	SWNBI	09-May-23	07-Apr-22
Northwich	Northwich	MRNOR	09-May-23	07-Apr-22
Penicuik	Penicuik	ESPCK	09-May-23	07-Apr-22
Pickering	Pickering	MYPIC	09-May-23	07-Apr-22
Rhos On Sea	Colwyn Bay	WNROS	09-May-23	07-Apr-22
Rosehearty	Rosehearty	NSRHT	09-May-23	07-Apr-22
Selby	Selby	MYSEL	09-May-23	07-Apr-22
Skipton	Skipton	MYSKP	09-May-23	07-Apr-22
Snaith	Snaith	MYSNH	09-May-23	07-Apr-22
Tranent	Tranent	ESTNT	09-May-23	07-Apr-22
Weaverham	Weaverham	MRWEA	09-May-23	07-Apr-22
Wentworth	Virginia Water	THWTH	09-May-23	07-Apr-22
Whissendine	Whissendine	EMWHISS	09-May-23	07-Apr-22
Wilpshire	Blackburn	LCWIL	09-May-23	07-Apr-22
Burntwood	Burntwood	CMBNW	09-May-23	07-Apr-22
Crayford	Greater London - Bexley	LSCRAY	09-May-23	07-Apr-22
Hucknall	Hucknall	EMHUCKN	09-May-23	07-Apr-22
Huxley	Duddon	WNHUX	09-May-23	07-Apr-22
Llanarmon-Yn-Ial	Llanarmon-yn-Ial	WNLYI	09-May-23	07-Apr-22
Paignton	Paignton	WWPAIG	09-May-23	07-Apr-22
Radyr	Cardiff	SWRRY	09-May-23	07-Apr-22

Exchange Name	Exchange Location	Exchange Code	Order restriction notification Date	Order restriction implementation Date
Ruddington	Clifton (City of Nottingham)	EMRDDIN	09-May-23	07-Apr-22
Tattenhall	Tattenhall	WNTHL	09-May-23	07-Apr-22
Tilston	Tilston	WNTIL	09-May-23	07-Apr-22
Wednesbury	Wednesbury	CMWED	09-May-23	07-Apr-22
Wilstead	Bedford	SMWLS	09-May-23	07-Apr-22
Ellesmere Port	Ellesmere Port	LVELL	08-Feb-23	20-Jul-22
Wetherby	Wetherby	MYWEH	08-Feb-23	20-Jul-22
Maybole	Maybole	WSMAY	08-Feb-23	20-Jul-22
Alva	Alva	ESALV	08-Feb-23	20-Jul-22
Borough Green	Borough Green	NDBGGR	08-Feb-23	20-Jul-22
Brixham	Brixham	WWBRIX	08-Feb-23	20-Jul-22
Downham Market	Downham Market	EADNM	08-Feb-23	20-Jul-22
Kirkliston	Edinburgh	ESKRL	08-Feb-23	20-Jul-22
Hooton	Ellesmere Port	LVHOO	08-Feb-23	20-Jul-22
Keynsham	Keynsham	SSKEY	08-Feb-23	20-Jul-22
Arnold	Arnold	EMARNOL	08-Feb-23	20-Jul-22
Sandiacre	Stapleford	EMSANDI	08-Feb-23	20-Jul-22
Kings Langley	Hemel Hempstead	LWKLAN	08-Feb-23	20-Jul-22
Garforth	Garforth	MYGRF	08-Feb-23	20-Jul-22
Lower Shelton	Wootton (Bedford)	SMLSN	08-Feb-23	20-Jul-22
Allesley	Coventry	CMALL	08-Feb-23	12-Jan-22
Ardrossan	Saltcoats	WSARD	08-Feb-23	12-Jan-22
Aviemore	Aviemore	NSAVI	08-Feb-23	12-Jan-22
Balham	Greater London - Wandsworth	LSBAL	08-Feb-23	12-Jan-22
Beith	Beith	WSBEI	08-Feb-23	12-Jan-22
Boston Spa	Boston Spa	MYBOS	08-Feb-23	12-Jan-22
Bury	Greater Manchester - Bury	MRBUR	08-Feb-23	12-Jan-22
Chellaston	Derby	EMCHELL	08-Feb-23	12-Jan-22
Childrey	Childrey	SMCDU	08-Feb-23	12-Jan-22
Creaton	Creaton	EMCRTON	08-Feb-23	12-Jan-22
Dalkeith	Dalkeith	ESDAL	08-Feb-23	12-Jan-22
Dunloy	Ballymena	NIDL	08-Feb-23	12-Jan-22
Duston	Northampton (Northamptonshire)	EMDUSTO	08-Feb-23	12-Jan-22
Earby	Earby	LCEAR	08-Feb-23	12-Jan-22

Exchange Name	Exchange Location	Exchange Code	Order restriction notification Date	Order restriction implementation Date
Easingwold	Easingwold	MYEAO	08-Feb-23	12-Jan-22
Feeny	Londonderry	NIFY	08-Feb-23	12-Jan-22
Foleshill	Coventry	CMFOL	08-Feb-23	12-Jan-22
Gowerton	Gowerton	SWGK	08-Feb-23	12-Jan-22
Hayes Common	Greater London - Bromley	LSHAY	08-Feb-23	12-Jan-22
Hemsworth	Hemsworth	MYHMW	08-Feb-23	12-Jan-22
Herongate	West Horndon	EAHER	08-Feb-23	12-Jan-22
Highworth	Highworth	SSHGH	08-Feb-23	12-Jan-22
Hoylake	Hoylake	LVHOY	08-Feb-23	12-Jan-22
Huyton	Liverpool	LVHUY	08-Feb-23	12-Jan-22
Hyde	Greater Manchester - Tameside	MRHYD	08-Feb-23	12-Jan-22
Intake	Sheffield	SLIN	08-Feb-23	12-Jan-22
Irby	Heswall	LVIRB	08-Feb-23	12-Jan-22
Irvinestown	Enniskillen	NIIT	08-Feb-23	12-Jan-22
Kilbirnie	Kilbirnie	WSKIE	08-Feb-23	12-Jan-22
Killeavy	Newry	NIKVY	08-Feb-23	12-Jan-22
Kircubbin	Newtownards	NIKN	08-Feb-23	12-Jan-22
Langford	Langford (Central Bedfordshire)	SMLA	08-Feb-23	12-Jan-22
Langley Mill	Heanor	EMLANGL	08-Feb-23	12-Jan-22
Leven	Leven	ESLEV	08-Feb-23	12-Jan-22
Llandaff	Cardiff	SWLJZ	08-Feb-23	12-Jan-22
Magor	Undy	SWMGR	08-Feb-23	12-Jan-22
Mayobridge	Newry	NIMO	08-Feb-23	12-Jan-22
Maze	Lisburn	NIMZ	08-Feb-23	12-Jan-22
Morecambe	Morecambe	LCMOR	08-Feb-23	12-Jan-22
Moy	Dungannon	NIMOY	08-Feb-23	12-Jan-22
Mulbarton	Mulbarton	EAMUL	08-Feb-23	12-Jan-22
Ormskirk	Ormskirk	LVORM	08-Feb-23	12-Jan-22
Otley	Otley	MYOTL	08-Feb-23	12-Jan-22
Park Street	How Wood	LNPKS	08-Feb-23	12-Jan-22
Portglenone	Ballymena	NIPE	08-Feb-23	12-Jan-22
Rawdon	Yeadon	MYRWD	08-Feb-23	12-Jan-22
Rhiwderin	Newport (Newport)	SWRWI	08-Feb-23	12-Jan-22

Exchange Name	Exchange Location	Exchange Code	Order restriction notification Date	Order restriction implementation Date
Rhose	Rhose	SWRHR	08-Feb-23	12-Jan-22
Richmond	Richmond	NERN	08-Feb-23	12-Jan-22
Ripley	Ripley	EMRPLEY	08-Feb-23	12-Jan-22
Rushden	Rushden	EMRUSHD	08-Feb-23	12-Jan-22
Sandwich	Sandwich	NDSAN	08-Feb-23	12-Jan-22
Sion Mills	Strabane	NISM	08-Feb-23	12-Jan-22
Sketty	Swansea	SWSKJ	08-Feb-23	12-Jan-22
Sleaford	Sleaford	EMSLFRD	08-Feb-23	12-Jan-22
Somersham	Somersham (Huntingdonshire)	EMSOSHM	08-Feb-23	12-Jan-22
Stoneyburn	Bents	ESSYB	08-Feb-23	12-Jan-22
Takeley	Takeley	EATKL	08-Feb-23	12-Jan-22
Theydon Bois	Theydon Bois	LNTHB	08-Feb-23	12-Jan-22
Waterhayes Farm	Newcastle-under-Lyme	WMWHS	08-Feb-23	12-Jan-22
Whitchurch	Bristol	SSWHI	08-Feb-23	12-Jan-22
Wootton Bassett	Wootton Bassett	SSWOB	08-Feb-23	12-Jan-22
Wraysbury	Wraysbury	LWWRA	08-Feb-23	12-Jan-22
Halkyn	Pentre Halkyn	WNHAL	01-Nov-22	20-Jul-22
Linstead	Cratfield	EALIN	01-Nov-22	20-Jul-22
Bramhall	Greater Manchester - Stockport	MRBRA	01-Nov-22	20-Jul-22
Codicote	Oaklands	SMCI	01-Nov-22	20-Jul-22
Stewarton	Stewarton	WSSTW	01-Nov-22	20-Jul-22
Stratton St.Margaret	Swindon (Wiltshire)	SSSSM	01-Nov-22	20-Jul-22
Hulme Hall	Greater Manchester - Stockport	MRHUL	01-Nov-22	07-Apr-22
Haydon Wick	Swindon (Wiltshire)	SSHYW	01-Nov-22	07-Apr-22
Brock	Bilsborrow	LCBRC	01-Nov-22	07-Apr-22
Bromborough	Bebington	LVBRO	01-Nov-22	07-Apr-22
Netherley	Liverpool	LVNET	01-Nov-22	07-Apr-22
Woodley	Greater Manchester - Stockport	MRWOO	01-Nov-22	07-Apr-22
Forest Row	Forest Row	NDFRO	01-Nov-22	07-Apr-22
Findon	Worthing	SDFNDN	01-Nov-22	07-Apr-22
Long Ashton	Long Ashton	SSLON	01-Nov-22	07-Apr-22
Prestwick	Prestwick	WSPRE	01-Nov-22	07-Apr-22

Exchange Name	Exchange Location	Exchange Code	Order restriction notification Date	Order restriction implementation Date
West Hanney	East Hanney	SMWHY	01-Nov-22	19-Oct-21
Knott End	Preesall	LCKNO	01-Nov-22	19-Oct-21
Hambleton	Hambleton (Wyre)	LCHAM	01-Nov-22	19-Oct-21
Glington	Glington	EMGLINT	01-Nov-22	19-Oct-21
Beaminster	Beaminster	STBMSTR	01-Nov-22	19-Oct-21
Prestatyn	Prestatyn	WNPRS	01-Nov-22	19-Oct-21
Lanark	Lanark	WSLAK	01-Nov-22	19-Oct-21
Ilminster	Ilminster	WWILMI	01-Nov-22	19-Oct-21
Blyth	Blyth (Northumberland)	NEBH	01-Nov-22	19-Oct-21
Buckie	Buckie	NSBKI	01-Nov-22	19-Oct-21
Burnham On Crouch	Burnham-on-Crouch	EABNH	01-Nov-22	19-Oct-21
Crick	Crick	CMCRI	01-Nov-22	19-Oct-21
Daventry	Daventry	EMDAVEN	01-Nov-22	19-Oct-21
Dunbar	Dunbar	ESDUR	01-Nov-22	19-Oct-21
Fauldhouse	Fauldhouse	ESFAU	01-Nov-22	19-Oct-21
Kings Lynn	King's Lynn	EAKLN	01-Nov-22	19-Oct-21
Merthyr Tydfil	Merthyr Tydfil	SWMT/EX	01-Nov-22	19-Oct-21
Rhuddlan	Rhuddlan	WNRHU	01-Nov-22	19-Oct-21
Rhyl	Rhyl	WNRE	01-Nov-22	19-Oct-21
Rhymney	Rhymney	SWRDA	01-Nov-22	19-Oct-21
Sheerness	Sheerness	NDSHE	01-Nov-22	19-Oct-21
St. Annes	Lytham St Anne's	LCSTA	01-Nov-22	19-Oct-21
Tavistock	Tavistock	WWTAVI	01-Nov-22	19-Oct-21
Towcester	Towcester	EMTOWCE	01-Nov-22	19-Oct-21
Winscombe	Winscombe	SSWIN	01-Nov-22	19-Oct-21
Sutton Coldfield	Sutton Coldfield	CMSUT	01-Nov-22	19-Oct-21
Mickleover	Derby	EMMICKL	01-Nov-22	19-Oct-21
Shardlow	Aston-on-Trent	EMSHARD	01-Nov-22	19-Oct-21
Hunts Cross	Liverpool	L VHUN	01-Nov-22	19-Oct-21
Normanton	Normanton	MYNMN	01-Nov-22	19-Oct-21
Blunsdon	Swindon (Wiltshire)	SSBBN	01-Nov-22	19-Oct-21
Bowmans Green	St Albans	LN BGN	01-Nov-22	19-Oct-21
Aghalee	Craigavon	NIAL	01-Nov-22	19-Oct-21
Ahoghill	Ballymena	NIAH	01-Nov-22	19-Oct-21
Ballycastle	Ballycastle	NIBT	01-Nov-22	19-Oct-21

Exchange Name	Exchange Location	Exchange Code	Order restriction notification Date	Order restriction implementation Date
Ballykinler	Downpatrick	NIBKR	01-Nov-22	19-Oct-21
Ballynahinch	Ballynahinch	NIBNH	01-Nov-22	19-Oct-21
Belcoo	Enniskillen	NIBCO	01-Nov-22	19-Oct-21
Belleek	Enniskillen	NIBEK	01-Nov-22	19-Oct-21
Bessbrook	Newry	NIBSB	01-Nov-22	19-Oct-21
Castlewellan	Castlewellan	NICW	01-Nov-22	19-Oct-21
Coagh	Cookstown	NICH	01-Nov-22	19-Oct-21
Crumlin	Crumlin	NICMN	01-Nov-22	19-Oct-21
Cullybackey	Ballymena	NICB	01-Nov-22	19-Oct-21
Cushendun	Ballymena	NICSD	01-Nov-22	19-Oct-21
Derryadd	Craigavon	NIDRY	01-Nov-22	19-Oct-21
Derrylin	Enniskillen	NIDYN	01-Nov-22	19-Oct-21
Drumbo	Lisburn	NIDBO	01-Nov-22	19-Oct-21
Fivemiletown	Fivemiletown	NIFN	01-Nov-22	19-Oct-21
Glenarm	Ballymena	NIGM	01-Nov-22	19-Oct-21
Kesh	Enniskillen	NIKH	01-Nov-22	19-Oct-21
Lisnaskea	Enniskillen	NILA	01-Nov-22	19-Oct-21
Chelston	Paignton	WWCHEL	02-Aug-22	07-Apr-22
Sully	Barry	SWXUU	02-Aug-22	12-Jan-22
Molesey	Greater London - Richmond upon Thames	LSMOL	02-Aug-22	12-Jan-22
Aberdare	Aberdare	SWAA	02-Aug-22	02-Aug-21
Ardglass	Downpatrick	NIAR	02-Aug-22	02-Aug-21
Ballyronan	Magherafelt	NIBRN	02-Aug-22	02-Aug-21
Barnoldswick	Barnoldswick	LCBAN	02-Aug-22	02-Aug-21
Beamish	Pelton	NEBEA	02-Aug-22	02-Aug-21
Bellaghy	Magherafelt	NIBY	02-Aug-22	02-Aug-21
Bexleyheath	Greater London - Bexley	LSBEX	02-Aug-22	02-Aug-21
Bidford On Avon	Bidford-on-Avon	CMBIDF	02-Aug-22	02-Aug-21
Brinscall	Brinscall	LCBRI	02-Aug-22	02-Aug-21
Caister-On-Sea	Caister-on-Sea	EACAI	02-Aug-22	02-Aug-21
Cardiff	Cardiff	SWCFATE	02-Aug-22	02-Aug-21
Castleford	Castleford	MYCAS	02-Aug-22	02-Aug-21
Castlerock	Coleraine	NICLK	02-Aug-22	02-Aug-21
Cheddar	Cheddar	SSCDR	02-Aug-22	02-Aug-21

Exchange Name	Exchange Location	Exchange Code	Order restriction notification Date	Order restriction implementation Date
Coalisland	Dungannon	NICI	02-Aug-22	02-Aug-21
Coleshill	Coleshill (North Warwickshire)	CMCOLE	02-Aug-22	02-Aug-21
Cumnock	Cumnock	WSCMN	02-Aug-22	02-Aug-21
Cushendall	Ballymena	NICUS	02-Aug-22	02-Aug-21
Denbigh	Denbigh	WNDEN	02-Aug-22	02-Aug-21
Dereham	Dereham	EADER	02-Aug-22	02-Aug-21
Drighlington	Batley	MYDLT	02-Aug-22	02-Aug-21
Dromore/Down	Dromore	NIDO	02-Aug-22	02-Aug-21
Earls Barton	Earls Barton	EMEARLS	02-Aug-22	02-Aug-21
Eglinton	Londonderry	NIEG	02-Aug-22	02-Aug-21
Elmsted	Wye	NDELM	02-Aug-22	02-Aug-21
Flint	Flint	WNFL	02-Aug-22	02-Aug-21
Forkhill	Newry	NIFH	02-Aug-22	02-Aug-21
Frodsham	Frodsham	LVFRO	02-Aug-22	02-Aug-21
Gilford	Craigavon	NIGF	02-Aug-22	02-Aug-21
Gillingham	Gillingham (North Dorset)	STGILGM	02-Aug-22	02-Aug-21
Glenborrodale	Glenborrodale	NSGBD	02-Aug-22	02-Aug-21
Glenmazeran	Tomatin	NSGMZ	02-Aug-22	02-Aug-21
Great Eccleston	Great Eccleston	LCGRC	02-Aug-22	02-Aug-21
Greyabbey	Newtownards	NIGY	02-Aug-22	02-Aug-21
Halfway	Glasgow	WSHAL	02-Aug-22	02-Aug-21
Helens Bay	Bangor	NIHB	02-Aug-22	02-Aug-21
Holywell	Holywell (Flintshire)	WNHW	02-Aug-22	02-Aug-21
Hullbridge	Hullbridge	EAHUL	02-Aug-22	02-Aug-21
Kelty	Kelty	ESKLY	02-Aug-22	02-Aug-21
Kilkeel	Newry	NIKI	02-Aug-22	02-Aug-21
Killyleagh	Downpatrick	NIKYL	02-Aug-22	02-Aug-21
Kincardine	Kincardine	ESKCA	02-Aug-22	02-Aug-21
Lennoxton	Lennoxton	WSLEX	02-Aug-22	02-Aug-21
Limavady	Limavady	NILY	02-Aug-22	02-Aug-21
Lymm	Lymm	LVLYM	02-Aug-22	02-Aug-21
Lytham	Lytham St Anne's	LCLYT	02-Aug-22	02-Aug-21
Maghull	Maghull	LVMAG	02-Aug-22	02-Aug-21
Middlewich	Middlewich	MRMDW	02-Aug-22	02-Aug-21

Exchange Name	Exchange Location	Exchange Code	Order restriction notification Date	Order restriction implementation Date
Millisle	Newtownards	NIME	02-Aug-22	02-Aug-21
Minster Sheppey	Minster (Swale)	NDMSH	02-Aug-22	02-Aug-21
Moira	Craigavon	NIMR	02-Aug-22	02-Aug-21
Mostyn	Mostyn	WNMOS	02-Aug-22	02-Aug-21
Pontardulais	Pontarddulais	SWPDW	02-Aug-22	02-Aug-21
Poulton-Le-Fylde	Poulton-le-Fylde	LCPOU	02-Aug-22	02-Aug-21
Saintfield	Ballynahinch	NISD	02-Aug-22	02-Aug-21
Scarista	Seilebost	NSSST	02-Aug-22	02-Aug-21
Shiphay Collaton	Paignton	WWSHIP	02-Aug-22	02-Aug-21
South Elmsall	South Elmsall	MYSEM	02-Aug-22	02-Aug-21
South Queensferry	Edinburgh	ESQUE	02-Aug-22	02-Aug-21
Stratton On The Fosse	Midsomer Norton	SSSOF	02-Aug-22	02-Aug-21
Waringstown	Craigavon	NIWT	02-Aug-22	02-Aug-21
Whalley	Whalley	LCWHA	02-Aug-22	02-Aug-21
Withernsea	Withernsea	MYWIT	02-Aug-22	02-Aug-21
Worthing Central	Worthing	SDWCNTR	02-Aug-22	02-Aug-21
Harborne	Birmingham	CMHARBO	29-Apr-22	12-Jan-22
Eastham	Bebington	LVEAS	29-Apr-22	12-Jan-22
Rickmansworth	Rickmansworth	LWRIC	29-Apr-22	12-Jan-22
West Kingsdown	West Kingsdown	NDWKI	29-Apr-22	12-Jan-22
Woodgate	Birmingham	CMWDGT	29-Apr-22	06-Sep-21
Hatch End	Watford	LWHAT	29-Apr-22	02-Aug-21
Thames Ditton	Esher	LSTHDT	29-Apr-22	02-Aug-21
Henley In Arden	Henley-In-Arden	CMHEN	29-Apr-22	29-Apr-21
Hillside	Birmingham	CMHILL	29-Apr-22	29-Apr-21
Lapworth	Solihull	CMLAP	29-Apr-22	29-Apr-21
Ely	Ely	EAELY	29-Apr-22	29-Apr-21
Latchingdon	Mayland	EALAT	29-Apr-22	29-Apr-21
Long Eaton	Long Eaton	EMLONGE	29-Apr-22	29-Apr-21
Melbourne	Melbourne (South Derbyshire)	EMMELBO	29-Apr-22	29-Apr-21
Bathgate	Bathgate	ESBAT	29-Apr-22	29-Apr-21
Kelso	Kelso	ESKEL	29-Apr-22	29-Apr-21
Peebles	Peebles	ESPEB	29-Apr-22	29-Apr-21
Ecclestone	Ecclestone	LCECC	29-Apr-22	29-Apr-21
Garstang	Garstang	LCGAR	29-Apr-22	29-Apr-21

Exchange Name	Exchange Location	Exchange Code	Order restriction notification Date	Order restriction implementation Date
Nazeing	Hoddesdon	LNNAZ	29-Apr-22	29-Apr-21
Norbury	Greater London - Croydon	LSNOR	29-Apr-22	29-Apr-21
Culcheth	Culcheth	LVCUL	29-Apr-22	29-Apr-21
Hayes	Greater London - Hillingdon	LWHAY	29-Apr-22	29-Apr-21
Winsford	Winsford (Cheshire West and Chester)	MRWIN	29-Apr-22	29-Apr-21
Hornsea	Hornsea	MYHNS	29-Apr-22	29-Apr-21
Pudsey	Leeds	MYPUD	29-Apr-22	29-Apr-21
Frittenden	Cranbrook	NDFRI	29-Apr-22	29-Apr-21
Willington	Willington (County Durham)	NEWT	29-Apr-22	29-Apr-21
Antrim	Antrim	NIAT	29-Apr-22	29-Apr-21
Banbridge	Banbridge	NIBB	29-Apr-22	29-Apr-21
Ballyclare	Ballyclare	NIBC	29-Apr-22	29-Apr-21
Ballymena	Ballymena	NIBM	29-Apr-22	29-Apr-21
Ballymoney	Ballymoney	NIBO	29-Apr-22	29-Apr-21
Ld/Brookhall	Londonderry	NIBRH	29-Apr-22	29-Apr-21
Ballywalter	Newtownards	NIBWR	29-Apr-22	29-Apr-21
Cookstown	Cookstown	NICK	29-Apr-22	29-Apr-21
Carnlough	Ballymena	NICL	29-Apr-22	29-Apr-21
Coleraine	Coleraine	NICN	29-Apr-22	29-Apr-21
Donaghadee	Donaghadee	NIDD	29-Apr-22	29-Apr-21
Dungannon	Dungannon	NIDG	29-Apr-22	29-Apr-21
Downpatrick	Downpatrick	NIDP	29-Apr-22	29-Apr-21
Enniskillen	Enniskillen	NIEK	29-Apr-22	29-Apr-21
Glengormley	Newtownabbey	NIGGY	29-Apr-22	29-Apr-21
Hillsborough	Hillsborough	NIHO	29-Apr-22	29-Apr-21
Hollywood	Hollywood	NIHW	29-Apr-22	29-Apr-21
Londonderry	Londonderry	NILDm	29-Apr-22	29-Apr-21
Ld/Waterside	Londonderry	NILDW	29-Apr-22	29-Apr-21
Larne	Larne	NILE	29-Apr-22	29-Apr-21
Lisburn	Lisburn	NILN	29-Apr-22	29-Apr-21
Magherafelt	Magherafelt	NIMF	29-Apr-22	29-Apr-21
Newcastle	Newcastle	NINE	29-Apr-22	29-Apr-21
Newry	Newry	NINY	29-Apr-22	29-Apr-21
Omagh	Omagh	NIOM	29-Apr-22	29-Apr-21

Exchange Name	Exchange Location	Exchange Code	Order restriction notification Date	Order restriction implementation Date
Portrush	Portrush	NIPR	29-Apr-22	29-Apr-21
Strabane	Strabane	NISE	29-Apr-22	29-Apr-21
Findhorn	Kinloss	NSFIN	29-Apr-22	29-Apr-21
Wadsleybridge	Sheffield	SLWB	29-Apr-22	29-Apr-21
Bedminster	Bristol	SSBED	29-Apr-22	29-Apr-21
Eastville	Bristol	SSEAV	29-Apr-22	29-Apr-21
Wrington	Wrington	SSWRI	29-Apr-22	29-Apr-21
Burry Port	Burry Port	SWBUD	29-Apr-22	29-Apr-21
Mumbles	Swansea	SWMMV	29-Apr-22	29-Apr-21
Stone	Stone (Stafford)	WMSTO	29-Apr-22	29-Apr-21
Buckley	Buckley	WNBUC	29-Apr-22	29-Apr-21
Chester South	Chester	WNCSS	29-Apr-22	29-Apr-21
Connahs Quay	Connah's Quay	WNDEE	29-Apr-22	29-Apr-21
Camelford	Camelford	WWCAME	29-Apr-22	29-Apr-21
Liskeard	Liskeard	WWLISK	29-Apr-22	29-Apr-21
Lynton	Lynton	WWLYNT	29-Apr-22	29-Apr-21
Cheylesmore	Coventry	CMCHEY	25-Jan-22	04-Oct-21
Orpington	Greater London - Bromley	LSORP	25-Jan-22	02-Aug-21
Binley	Coventry	CMBIN	25-Jan-22	25-Jan-21
Hardingstone	Northampton (Northamptonshire)	EMHARDI	25-Jan-22	25-Jan-21
Peartree	Derby	EMPRTRE	25-Jan-22	25-Jan-21
Whitburn	Whitburn	ESWHI	25-Jan-22	25-Jan-21
Formby	Formby	LCFOM	25-Jan-22	25-Jan-21
Epsom	Epsom	LSEPSM	25-Jan-22	25-Jan-21
Aughton Green	Ormskirk	LVAUG	25-Jan-22	25-Jan-21
Birkenhead	Birkenhead	LVBIR	25-Jan-22	25-Jan-21
Chorleywood	Chorleywood	LWCHO	25-Jan-22	25-Jan-21
Chapeltown	Leeds	MYCHA	25-Jan-22	25-Jan-21
Crossgates	Leeds	MYCSG	25-Jan-22	25-Jan-21
Moortown	Leeds	MYMOO	25-Jan-22	25-Jan-21
Whitley Bay	Whitley Bay	NEWB	25-Jan-22	25-Jan-21
Balby	Doncaster	SLBAL	25-Jan-22	25-Jan-21
Woodhouse	Sheffield	SLWD	25-Jan-22	25-Jan-21
North	Bristol	SSNOR	25-Jan-22	25-Jan-21

Exchange Name	Exchange Location	Exchange Code	Order restriction notification Date	Order restriction implementation Date
Bungay	Bungay	EABGY	25-Jan-22	25-Jan-21
Sheering	Sawbridgeworth	EASHR	25-Jan-22	25-Jan-21
Southminster	Southminster	EASMN	25-Jan-22	25-Jan-21
Anstruther	Anstruther Easter	ESANS	25-Jan-22	25-Jan-21
Lundin Links	Lower Largo	ESLUN	25-Jan-22	25-Jan-21
West Calder	West Calder	ESWCA	25-Jan-22	25-Jan-21
Burscough	Burscough	LCBUS	25-Jan-22	25-Jan-21
Clitheroe	Clitheroe	LCCLR	25-Jan-22	25-Jan-21
Croston	Croston	LCCRS	25-Jan-22	25-Jan-21
Fleetwood	Fleetwood	LCFLW	25-Jan-22	25-Jan-21
Rufford	Towngate	LCRUF	25-Jan-22	25-Jan-21
Betchworth	Brockham	LSBET	25-Jan-22	25-Jan-21
Neston	Neston	LVNES	25-Jan-22	25-Jan-21
Congleton	Congleton	MRCON	25-Jan-22	25-Jan-21
Kirkburton	Huddersfield	MYKKB	25-Jan-22	25-Jan-21
Crook	Crook	NECR	25-Jan-22	25-Jan-21
Olney	Olney	SMOY	25-Jan-22	25-Jan-21
Tarvin	Tarvin	WNTV	25-Jan-22	25-Jan-21
Okehampton	Okehampton	WWOKEH	25-Jan-22	25-Jan-21
Campsie	Londonderry	NICSI	25-Jan-22	25-Jan-21
Carrickfergus	Carrickfergus	NIC	25-Jan-22	25-Jan-21
Castledawson	Magherafelt	NICD	25-Jan-22	25-Jan-21
Comber	Newtownards	NICR	25-Jan-22	25-Jan-21
Cross	Londonderry	NICRS	25-Jan-22	25-Jan-21
Dundrum	Newcastle	NIDR	25-Jan-22	25-Jan-21
Portavogie	Newtownards	NIPVE	25-Jan-22	25-Jan-21
Portstewart	Portstewart	NIPS	25-Jan-22	25-Jan-21
Warrenpoint	Newry	NIWP	25-Jan-22	25-Jan-21
Whitehead	Carrickfergus	NIWD	25-Jan-22	25-Jan-21
Swansea	Swansea	SWSX	13-Oct-21	10-May-21
Dagenham	Greater London - Barking and Dagenham	LNDAG	13-Oct-21	10-May-21
Be/City	Belfast	NICTY	13-Oct-21	10-May-21
Failsworth	Greater Manchester - Oldham	MRFAI	13-Oct-21	10-May-21
Kilmarnock	Kilmarnock	WSKIL	13-Oct-21	10-May-21

Exchange Name	Exchange Location	Exchange Code	Order restriction notification Date	Order restriction implementation Date
Wallasey	Wallasey	LVWAL	13-Oct-21	10-May-21
Belfast Balmoral	Belfast	NIBML	13-Oct-21	10-May-21
Merton Park	Greater London - Merton	LSMEPK	13-Oct-21	10-May-21
Morley	Morley	MYMOR	13-Oct-21	10-May-21
Stoneycroft	Liverpool	LVSTO	13-Oct-21	10-May-21
Walkden	Greater Manchester - Salford	MRWAL	13-Oct-21	10-May-21
Whitchurch	Cardiff	SWWXC	13-Oct-21	10-May-21
Gosforth	Newcastle upon Tyne	NEGF	13-Oct-21	10-May-21
Headingley	Leeds	MYHEA	13-Oct-21	10-May-21
Harehills	Leeds	MYHHL	13-Oct-21	10-May-21
Eccles	Greater Manchester - Salford	MRECC	13-Oct-21	10-May-21
Claughton	Birkenhead	LVCLA	13-Oct-21	10-May-21
Swinton	Greater Manchester - Salford	MRSWI	13-Oct-21	10-May-21
Tile Hill	Coventry	CMTIL	13-Oct-21	10-May-21
South	Bristol	SSSOU	13-Oct-21	10-May-21
Prestwich	Greater Manchester - Bury	MRPRE	13-Oct-21	10-May-21
Gedling	Carlton (Gedling)	EMGDDLI	13-Oct-21	10-May-21
Rock Ferry	Bebington	LVROC	13-Oct-21	10-May-21
Whiteabbey	Newtownabbey	NIWBY	13-Oct-21	10-May-21
Whitefield	Greater Manchester - Bury	MRWHI	13-Oct-21	10-May-21
Sherwood	Nottingham	EMSHRWO	13-Oct-21	10-May-21
Burgh Heath	Ewell	LSBURH	13-Oct-21	10-May-21
Gants Hill	Greater London - Redbridge	LNGHL	13-Oct-21	10-May-21
Belfast East	Belfast	NIEAS	13-Oct-21	10-May-21
Earlsdon	Coventry	CMEARD	13-Oct-21	10-May-21
Bearwood	Birmingham	CMBEAR	13-Oct-21	10-May-21
Ewell	Ewell	LSEWE	13-Oct-21	10-May-21
Cressington	Liverpool	LVCRE	13-Oct-21	10-May-21
Sefton Park	Liverpool	LVSEF	13-Oct-21	10-May-21
Radcliffe	Greater Manchester - Bury	MRRAD	13-Oct-21	10-May-21
Trentside	West Bridgford	EMTRENT	13-Oct-21	10-May-21
Abbeyhill	Edinburgh	ESABB	13-Oct-21	10-May-21
Great Crosby	Crosby	LVGRE	13-Oct-21	10-May-21
Belfast Malone	Belfast	NIMAL	13-Oct-21	10-May-21
Springfield	Birmingham	CMSPR	13-Oct-21	10-May-21

Exchange Name	Exchange Location	Exchange Code	Order restriction notification Date	Order restriction implementation Date
Horsforth	Horsforth	MYHSF	13-Oct-21	10-May-21
Bishopsworth	Bristol	SSBIS	13-Oct-21	10-May-21
Belfast North	Belfast	NINTH	13-Oct-21	10-May-21
Dundonald	Belfast	NIDLD	13-Oct-21	10-May-21
Belfast Ormeau	Belfast	NIORM	13-Oct-21	10-May-21
Childwall	Liverpool	LVCHI	13-Oct-21	10-May-21
Radford	Coventry	CMRAD	13-Oct-21	10-May-21
Gateacre	Liverpool	LVGAT	13-Oct-21	10-May-21
Birchfield	Birmingham	CMBIR	13-Oct-21	10-May-21
Allestree Park	Derby	EMALLES	13-Oct-21	10-May-21
Pinhoe	Exeter	WWPINH	13-Oct-21	10-May-21
Keresley	Coventry	CMKER	13-Oct-21	10-May-21
Kentford	Mildenhall	EAKEN	13-Oct-21	10-May-21
Westbury-On-Trym	Bristol	SSWOT	13-Oct-21	10-May-21
Carryduff	Belfast	NICF	13-Oct-21	10-May-21
Cranfield	Cranfield	SMCR	13-Oct-21	10-May-21
Tarporley	Tarporley	WNTAR	13-Oct-21	10-May-21
Belfast Stormont	Belfast	NISTM	13-Oct-21	10-May-21
Flockton	Flockton	MYFLO	13-Oct-21	10-May-21
Parbold	Parbold	LCPAR	13-Oct-21	10-May-21
Mickle Trafford	Chester	WNMT	13-Oct-21	10-May-21
Padstow	Padstow	WWPADS	13-Oct-21	10-May-21
Daviot	Inverness	NSDAV	13-Oct-21	10-May-21
Rumford	St Eval	WWRUMF	13-Oct-21	10-May-21
Catforth	Preston (Lancashire)	LCCAT	13-Oct-21	10-May-21
St Buryan	St Buryan	WWSBUR	13-Oct-21	10-May-21
Lanreath	Pelynt	WWLANR	13-Oct-21	10-May-21
Coads Green	Launceston	WWCOAD	13-Oct-21	10-May-21
Otterham Station	Camelford	WWOSTN	13-Oct-21	10-May-21
Burleygate	Withington (County of Herefordshire)	WNBGT	13-Oct-21	10-May-21
Crosthwaite	Crosthwaite	LCCHE	13-Oct-21	10-May-21
Chineham	Basingstoke	THCHN	13-Oct-21	10-May-21
Bonvilston	Bonvilston	SWBJY	13-Oct-21	10-May-21
Tresillian	Tresillian	WWTRES	13-Oct-21	10-May-21

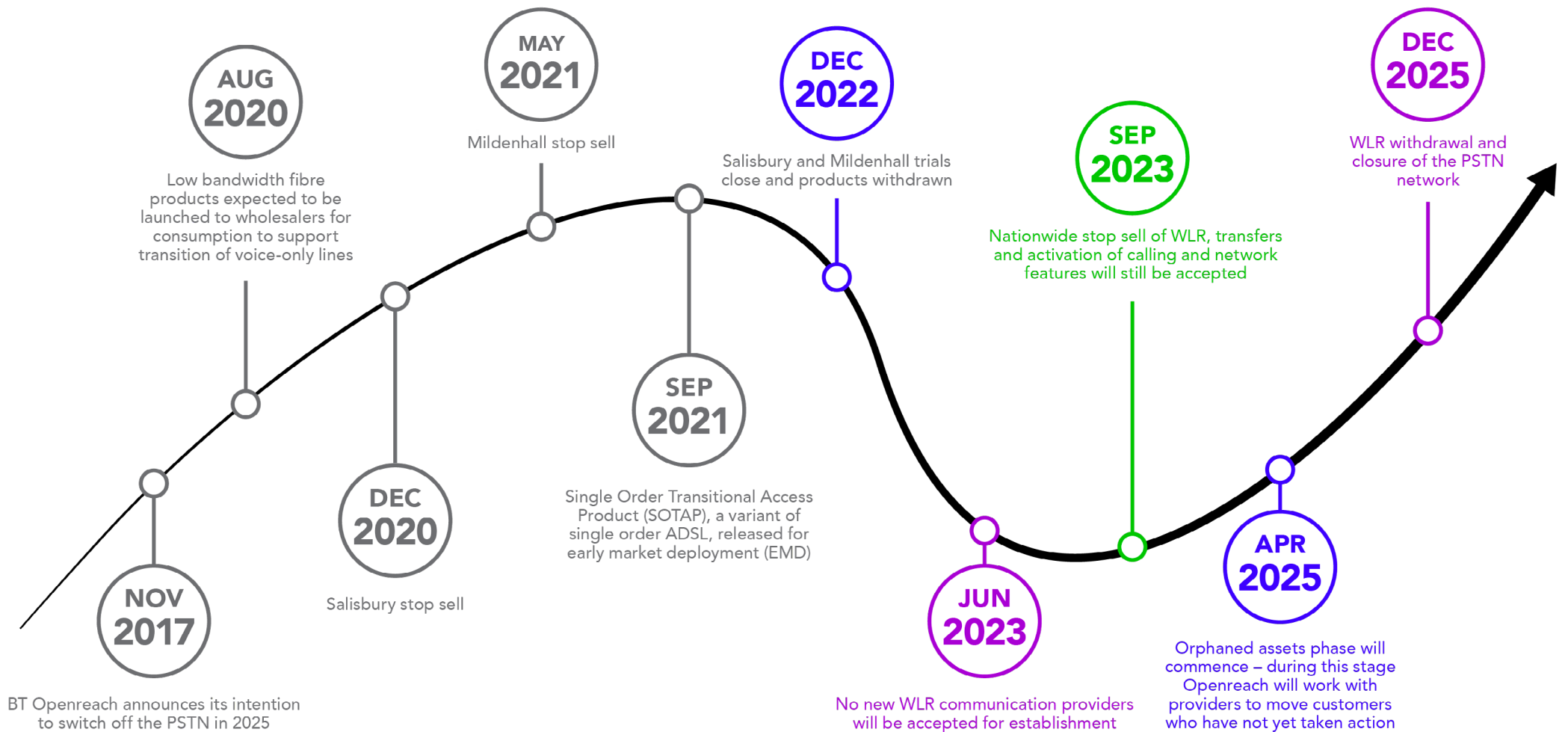
Exchange Name	Exchange Location	Exchange Code	Order restriction notification Date	Order restriction implementation Date
Canworthy Water	Launceston	WWCANW	13-Oct-21	10-May-21
Llandegla	Llandegla	WNLDA	13-Oct-21	10-May-21
Wettenhall	Winsford (Cheshire West and Chester)	WMWET	13-Oct-21	10-May-21
Tudweiliog	Llangwnnagl	WNTUD	13-Oct-21	10-May-21
Harewood End	Peterstow	WNHAE	13-Oct-21	10-May-21
Crookham	Cornhill on Tweed	ESCRO	13-Oct-21	10-May-21
Arley	Arley	MRARL	13-Oct-21	10-May-21
Belsay	Belsay	NEBLS	13-Oct-21	10-May-21
Southwick	Sandyhills	WSSOK	13-Oct-21	10-May-21
Bridgemere	Nantwich	WMBGM	13-Oct-21	10-May-21
Boreland	Boreland	WSBOR	13-Oct-21	10-May-21
Bontddu	Bontddu	WNBON	13-Oct-21	10-May-21
Great Bernera	Kirkibost	NSGRE	13-Oct-21	10-May-21
Ringford	Ringford	WSRIN	13-Oct-21	10-May-21
Sutton	Sutton (Chichester)	SDSTTN	13-Oct-21	10-May-21
East Marden	Compton (West Sussex)	SDSTMRD	13-Oct-21	10-May-21
Lempitlaw	Kelso	ESLEM	13-Oct-21	10-May-21
Achnasheen	Achnasheen	NSASN	13-Oct-21	10-May-21
Aultguish	Garve	NSALG	13-Oct-21	10-May-21
Altnaharra	Altnaharra	NSALT	13-Oct-21	10-May-21
Armagh	Armagh	NIAM	13-Oct-21	05-Oct-20
Bangor	Bangor	NIBA	13-Oct-21	05-Oct-20
Barry	Barry	SWCFK	13-Oct-21	05-Oct-20
Benton	Longbenton	NEB	13-Oct-21	05-Oct-20
Bromsgrove	Bromsgrove	WMBPZ	13-Oct-21	05-Oct-20
Broxburn	Broxburn	ESBRO	13-Oct-21	05-Oct-20
Capheaton	Capheaton	NECAP	13-Oct-21	05-Oct-20
Caxton	Cambourne	EACAX	13-Oct-21	05-Oct-20
Doncaster	Doncaster	SLDC	13-Oct-21	05-Oct-20
Doncaster North	Bentley (Doncaster)	SLDCN	13-Oct-21	05-Oct-20
Edwalton	West Bridgford	EMEDWAL	13-Oct-21	05-Oct-20
Glendale	Glen Dale	NSGDL	13-Oct-21	05-Oct-20
Ilford North	Greater London - Redbridge	LNILN	13-Oct-21	05-Oct-20
Longridge	Longridge	LCLON	13-Oct-21	05-Oct-20

Exchange Name	Exchange Location	Exchange Code	Order restriction notification Date	Order restriction implementation Date
Lurgan	Craigavon	NILG	13-Oct-21	05-Oct-20
Mountwood	Birkenhead	LVMOU	13-Oct-21	05-Oct-20
Newtownards	Newtownards	NINTS	13-Oct-21	05-Oct-20
Portadown	Craigavon	NIPO	13-Oct-21	05-Oct-20
Saxmundham	Saxmundham	EASXM	13-Oct-21	05-Oct-20
Tadcaster	Tadcaster	MYTAD	13-Oct-21	05-Oct-20
Thornton Heath	Greater London - Croydon	LSTHO	13-Oct-21	05-Oct-20
Waterloo	Crosby	LWWAT	13-Oct-21	05-Oct-20
Waternish	Lusta	NSWNS	13-Oct-21	05-Oct-20
Winterton	Winterton	SLWKT	13-Oct-21	05-Oct-20
Wollaton	Nottingham	EMWOLLA	13-Oct-21	05-Oct-20
Wythenshawe	Greater Manchester - Manchester	MRWYT	13-Oct-21	05-Oct-20
Stechford	Birmingham	CMSTE	29-Jun-21	10-May-21
Belfast Cregagh	Belfast	NICRG	29-Jun-21	10-May-21
Sheldon	Birmingham	CMSHEL	29-Jun-21	10-May-21
Streetly	Sutton Coldfield	CMSTRE	29-Jun-21	10-May-21
Highbury	Birmingham	CMHIGH	29-Jun-21	10-May-21
Belfast Knock	Belfast	NIKNK	29-Jun-21	10-May-21
Be/Ballysillan	Belfast	NIBYS	29-Jun-21	10-May-21
Belfast Fortwilliam	Belfast	NIFWM	29-Jun-21	10-May-21
Beacon	Birmingham	CMBEAC	29-Jun-21	10-May-21
Kenton Road	Greater London - Harrow	LWKROA	29-Jun-21	10-May-21
Corstorphine	Edinburgh	ESCOR	29-Jun-21	10-May-21
Caergwrle	Hope (Flintshire)	WNCAG	29-Jun-21	10-May-21
Deddington	Deddington	SMDD	29-Jun-21	10-May-21
Salisbury	Salisbury	STSALIS	01-Dec-20	01-Dec-19

Glossary

ADSL	Asymmetric Digital Subscriber Line
ATA	Analogue Telephone Adapter
CNI	Critical National Infrastructure
CP	Communications Provider
CRFS	Customers Ready For Service
EU	End User
GEA-FTTC	Generic Ethernet Access Fibre To The Cabinet
GEA-FTTP	Generic Ethernet Access Fibre To The Premises
ISDN	Integrated Services Digital Network
LLU	Local Loop Unbundling
MPF	Metallic Path Facility
NTE	Network Terminating Equipment
OTT	Over The Top
PSTN	Public Switched Telephone Network
SMPF	Shared Metallic Path Facility
SOGEA	Singe Order Generic Ethernet Access
SOGFAST	Single Order G.Fast
SOTAP	Single Order Transitional Access Product
VDSL	Very high-speed Digital Subscriber Line
VOIP	Voice Over Internet Protocol
WLR	Wholesale Line Rental
WLR Product(s)	WLR3 Analogue, ISDN2, ISDN30, SMPF, SLU SMPF, Narrowband Line Share and Classic Products

TIMELINE OF THE PSTN/ISDN SWITCH OFF 2025



Got a question that is not listed here?

Get in touch and our expert team will be happy to provide a personal response.

Both hosted voice and SIP are easily scalable for any growth aspirations – Daisy can help you find the solution that best fits your business objectives and strategy and migrate your services with minimum disruption to your business. For all your voice and data solutions we can get you connected.

Call: **0344 863 3000**

Email: enquiry@daisyuk.tech