

FREE!
DOWNLOAD

NEW STORY of DAISY MANAGED SD-WAN

DAISY CORPORATE SERVICES



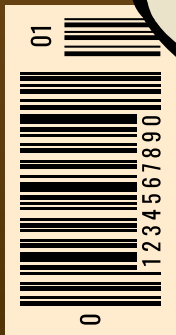
daisy.

CORPORATE SERVICES

★★★★★ 237

DAISY SD-WAN

AND THE BUILDING OF A
FUTURE-PROOF
BUSINESS



**SPECIAL
EDITION**

DAISY SD-WAN

AND THE BUILDING OF A FUTURE-PROOF BUSINESS

A CONSTRUCTION COMPANY READIES ITSELF FOR THE START OF A LARGE DEVELOPMENT PROJECT AT A RECENTLY ACQUIRED GREENFIELD SITE. BUT THE SITE'S REMOTE LOCATION WITH LIMITED FIXED INFRASTRUCTURE AND WIRELESS COVERAGE LOOKS SET TO JEOPARDISE THE PROJECT'S PROGRESS AS THE CONNECTIVITY REQUIRED TO ALLOW EQUIPMENT AND WORKERS TO MOVE AROUND CAN'T BE PROVIDED BY THE RIGID SOLUTION CURRENTLY IN PLACE.

I'M LOOKING FORWARD TO THIS MORNING'S MEETING. THIS LATEST PROJECT IS A BRILLIANT OPPORTUNITY FOR US AND IT'S A GOOD SIGN OF THE HOUSING MARKET BEING IN A STRONG POSITION. THIS WILL GIVE US A BIG ADVANTAGE OVER OUR COMPETITORS.



CONSTRUCTION COMPANY CENTRAL OFFICES...

WE'VE SEEN DEMAND FOR LUXURY HOMES IN THIS RURAL AREA RISE AND THIS NEW LOCATION OFFERS PLENTY OF SOUGHT-AFTER BENEFITS, PLUS STRONG TRANSPORT LINKS TO THE CITY. IT'S A GREAT OPPORTUNITY FOR THIS BUSINESS...




?

I'VE HEARD CONNECTIVITY IN THAT AREA IS A REAL NIGHTMARE. I'M JUST WONDERING, GIVEN THAT AND THE TROUBLE WE HAD RECENTLY AT OUR OTHER SITE WITH COMMUNICATING WITH THE CONTRACTORS, IS THIS SOMETHING WE NEED TO BE CONSIDERING?

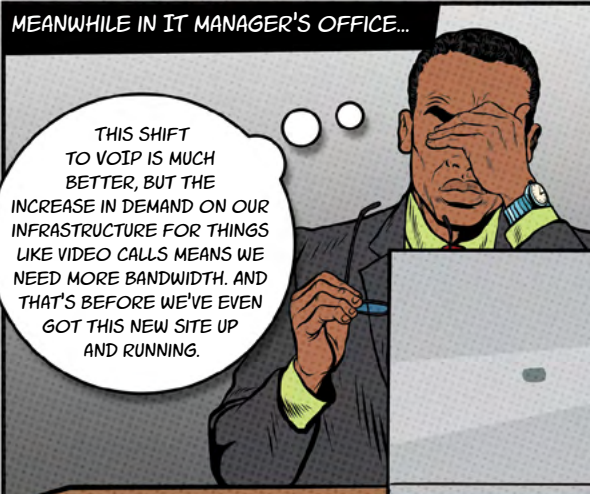


WELL AS WE ALL KNOW, WE MOVED AWAY FROM OUR OLD PHONE SYSTEM EARLIER THIS YEAR AND SWITCHED TO VOIP, SO THE BUSINESS IS BETTER CONNECTED NOW THAN IT'S EVER BEEN. ANYWAY, THE IT TEAM WILL BE TRAVELLING THERE IN THE NEXT FEW WEEKS TO DO A SITE ASSESSMENT SO I'M SURE ALL OF THAT WILL BE IN HAND.



MEANWHILE IN IT MANAGER'S OFFICE...

THIS SHIFT TO VOIP IS MUCH BETTER, BUT THE INCREASE IN DEMAND ON OUR INFRASTRUCTURE FOR THINGS LIKE VIDEO CALLS MEANS WE NEED MORE BANDWIDTH. AND THAT'S BEFORE WE'VE EVEN GOT THIS NEW SITE UP AND RUNNING.




SOME WEEKS LATER...

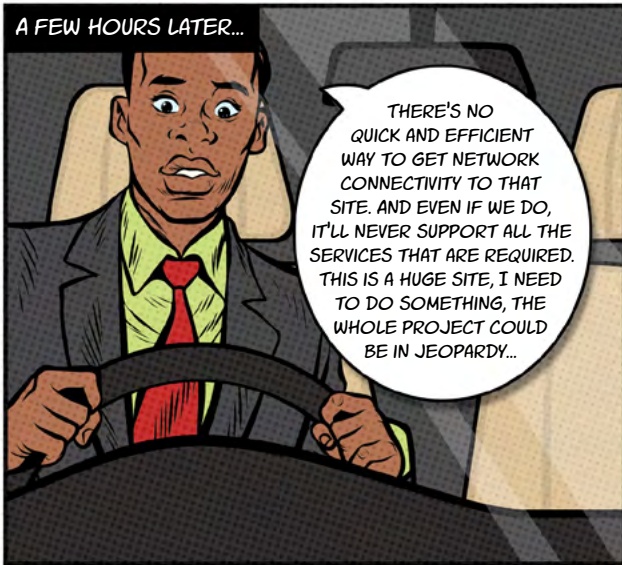
AT SITE INSPECTION...

THEY WEREN'T JOKING ABOUT THIS BEING A REMOTE AREA WERE THEY. IT TOOK ME AGES TO FIND.

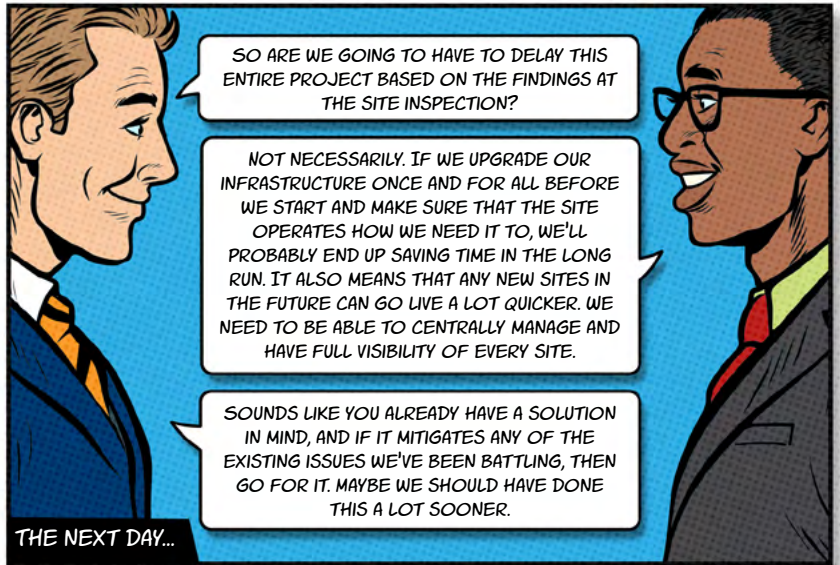
YES, SORRY I'M LATE, I STRUGGLED TOO. I DID TRY CALLING BUT I COULDN'T GET THROUGH. LET'S HAVE A LOOK AT WHAT WE'RE DEALING WITH THEN...



A FEW HOURS LATER...



THERE'S NO QUICK AND EFFICIENT WAY TO GET NETWORK CONNECTIVITY TO THAT SITE. AND EVEN IF WE DO, IT'LL NEVER SUPPORT ALL THE SERVICES THAT ARE REQUIRED. THIS IS A HUGE SITE, I NEED TO DO SOMETHING, THE WHOLE PROJECT COULD BE IN JEOPARDY...

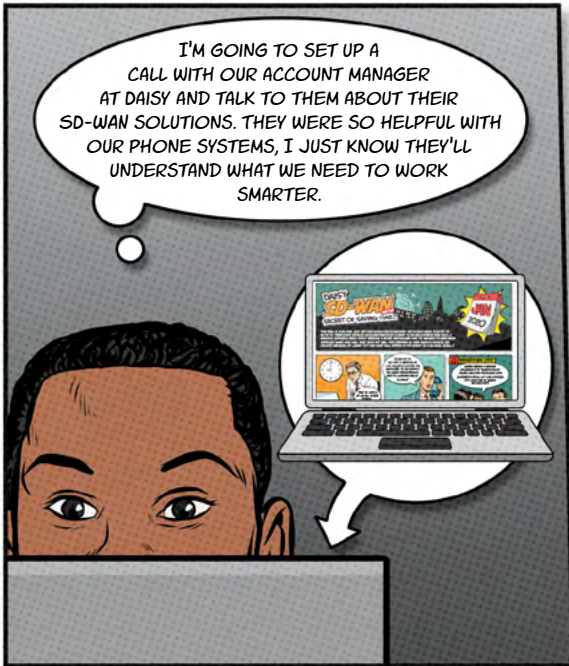


SO ARE WE GOING TO HAVE TO DELAY THIS ENTIRE PROJECT BASED ON THE FINDINGS AT THE SITE INSPECTION?

NOT NECESSARILY. IF WE UPGRADE OUR INFRASTRUCTURE ONCE AND FOR ALL BEFORE WE START AND MAKE SURE THAT THE SITE OPERATES HOW WE NEED IT TO, WE'LL PROBABLY END UP SAVING TIME IN THE LONG RUN. IT ALSO MEANS THAT ANY NEW SITES IN THE FUTURE CAN GO LIVE A LOT QUICKER. WE NEED TO BE ABLE TO CENTRALLY MANAGE AND HAVE FULL VISIBILITY OF EVERY SITE.

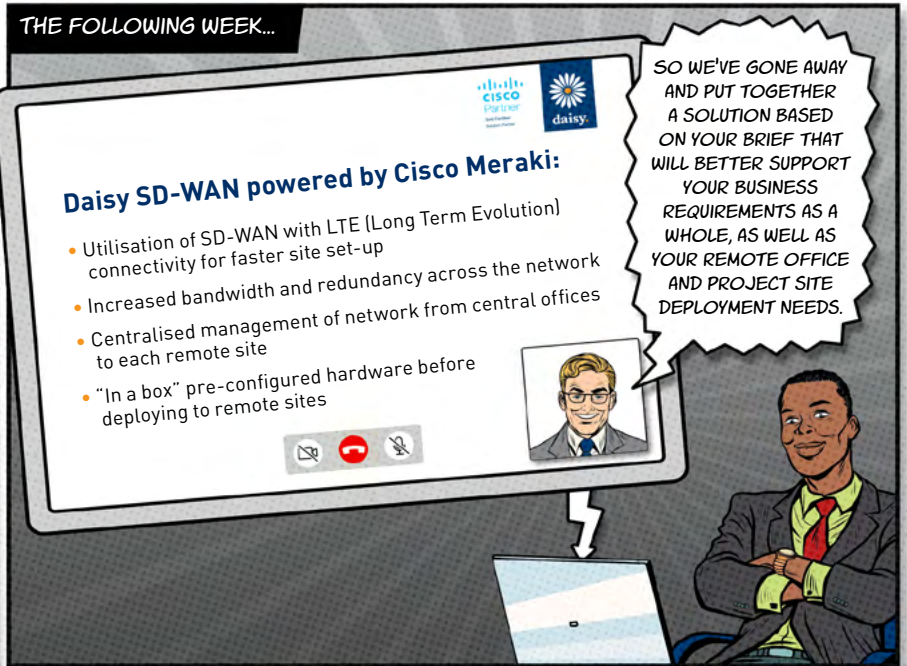
SOUNDS LIKE YOU ALREADY HAVE A SOLUTION IN MIND, AND IF IT MITIGATES ANY OF THE EXISTING ISSUES WE'VE BEEN BATTLING, THEN GO FOR IT. MAYBE WE SHOULD HAVE DONE THIS A LOT SOONER.

THE NEXT DAY...



I'M GOING TO SET UP A CALL WITH OUR ACCOUNT MANAGER AT DAISY AND TALK TO THEM ABOUT THEIR SD-WAN SOLUTIONS. THEY WERE SO HELPFUL WITH OUR PHONE SYSTEMS, I JUST KNOW THEY'LL UNDERSTAND WHAT WE NEED TO WORK SMARTER.

THE FOLLOWING WEEK...



Daisy SD-WAN powered by Cisco Meraki:

- Utilisation of SD-WAN with LTE (Long Term Evolution) connectivity for faster site set-up
- Increased bandwidth and redundancy across the network
- Centralised management of network from central offices to each remote site
- "In a box" pre-configured hardware before deploying to remote sites

SO WE'VE GONE AWAY AND PUT TOGETHER A SOLUTION BASED ON YOUR BRIEF THAT WILL BETTER SUPPORT YOUR BUSINESS REQUIREMENTS AS A WHOLE, AS WELL AS YOUR REMOTE OFFICE AND PROJECT SITE DEPLOYMENT NEEDS.

A FEW MONTHS LATER...
ON SITE...



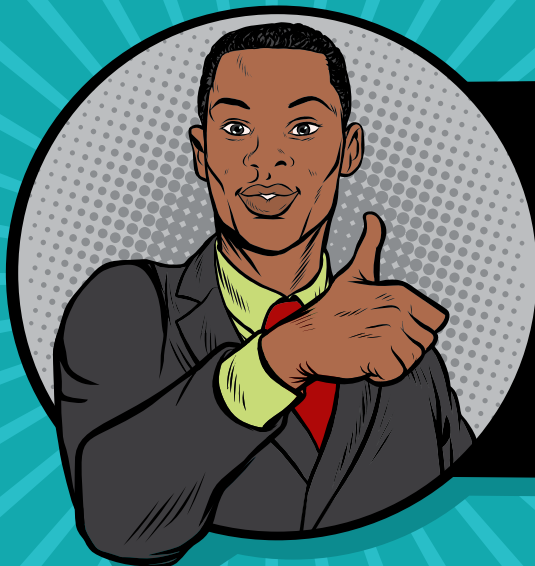
WE NEED THE ARCHITECTS PLANS SENDING OVER. WE'RE CLOSE TO BEING READY TO GET THE SECOND PHASE OF HOUSES CONSTRUCTED. IT'S GOING REALLY WELL HERE AND WE'RE AHEAD OF TIME.

BACK AT HEAD OFFICE...



I'LL HAVE THE FILES TRANSFERRED FOR YOU NOW ON AN EMAIL. THE SHOW HOME IS GETTING A LOT OF ATTENTION, THERE'S A LOT OF INTEREST IN THIS DEVELOPMENT.

SO THAT'S THE CONTRACTORS AT OUR CITY SITE OFFICIALLY FINISHED WITH THAT COMMERCIAL OFFICE DEVELOPMENT. SO WITH THE SECOND PHASE OF THIS NEW DEVELOPMENT UNDERWAY, I'LL GIVE THAT SITE HIGH TRAFFIC PRIORITY TO GIVE GUARANTEED BANDWIDTH.



TOMORROW'S INFRASTRUCTURE IS BUILT USING TECHNOLOGY THAT'S AVAILABLE TODAY. WHETHER IT'S CONNECTING EXISTING SITE LOCATIONS OR OPTIMISING BEST-CASE TRANSPORT WITH LIMITED CONNECTIVITY OPTIONS, DO IT ALL WITH DAISY SD-WAN.

Visit:

[DCS.TECH/SD-WAN-ROADMAP](https://dcs.tech/sd-wan-roadmap)

to construct your own network empire
or call 0344 863 3000